



Fifehead Manor

Middle Wallop Hampshire

A superb development including a renovated manor house with outbuildings into fifteen individually designed luxury apartments and houses



FIFEHEAD MANOR



Fifehead Manor is a superb conversion and development by Angerwich Properties and New Forest Developments of a 16th Century Grade II* listed Manor House and outbuildings into fifteen individually designed luxury apartments and houses.



Situated on the edge of Middle Wallop, one of the group of villages making up The Wallops, Fifehead Manor is set in two acres of landscaped gardens and is surrounded by open fields and countryside.



Five unique two bedroom apartments and two outstanding three bedroom houses have been created in the former Manor House. To the north of the Manor House there is a terrace of three individual two and three bedroom chalets with private gardens and views over open countryside. Fronting the Manor House there are three brand new three bedroom terrace houses with private gardens and two semi-detached, two bedroom brick and flint detailed bungalows with private courtyards.



With the site originating in the 11th Century Saxon times, and reputed to be the birthplace of Lady Godiva, Fifehead Manor is steeped in history. The Manor House itself was re-built on the grounds of the original house in the Elizabethan age and reflects the architecture of that period. An inglenook fireplace, cellarage, tall elegant chimneys, lead-paned windows and oak beamed ceilings are only a few of the stunning features of this development.



AN IDEAL LOCATION



Fifehead Manor is ideally located close to the fashionable market town of Stockbridge with its contemporary restaurants, art galleries, designer boutiques and specialist stores. It also benefits from being equidistant from the vibrant cathedral cities of Winchester and Salisbury, combining the peace of the countryside with city life.

Stockbridge, Winchester, Salisbury and the surrounding areas provide extensive facilities for recreation. There are a number of superb Golf Clubs, including The Royal Winchester, and horse racing is close by at Salisbury, Newbury and Wincanton. Just a short drive away is the charming New Forest, the sailing centres of the Solent and the beautiful beaches of the South Coast.

Known the world over for the excellent fishing in the River Test, the surrounding countryside offers a number of other country leisure pursuits.

For travel further afield, road and rail connections are excellent. Rail commuters can reach London Waterloo from nearby Grateley Station in 80 minutes, or Winchester in 55 minutes. For international travel Southampton and Bournemouth Airports are easily reached.



EXCEPTIONAL HOMES, EXCEPTIONAL LOCATIONS



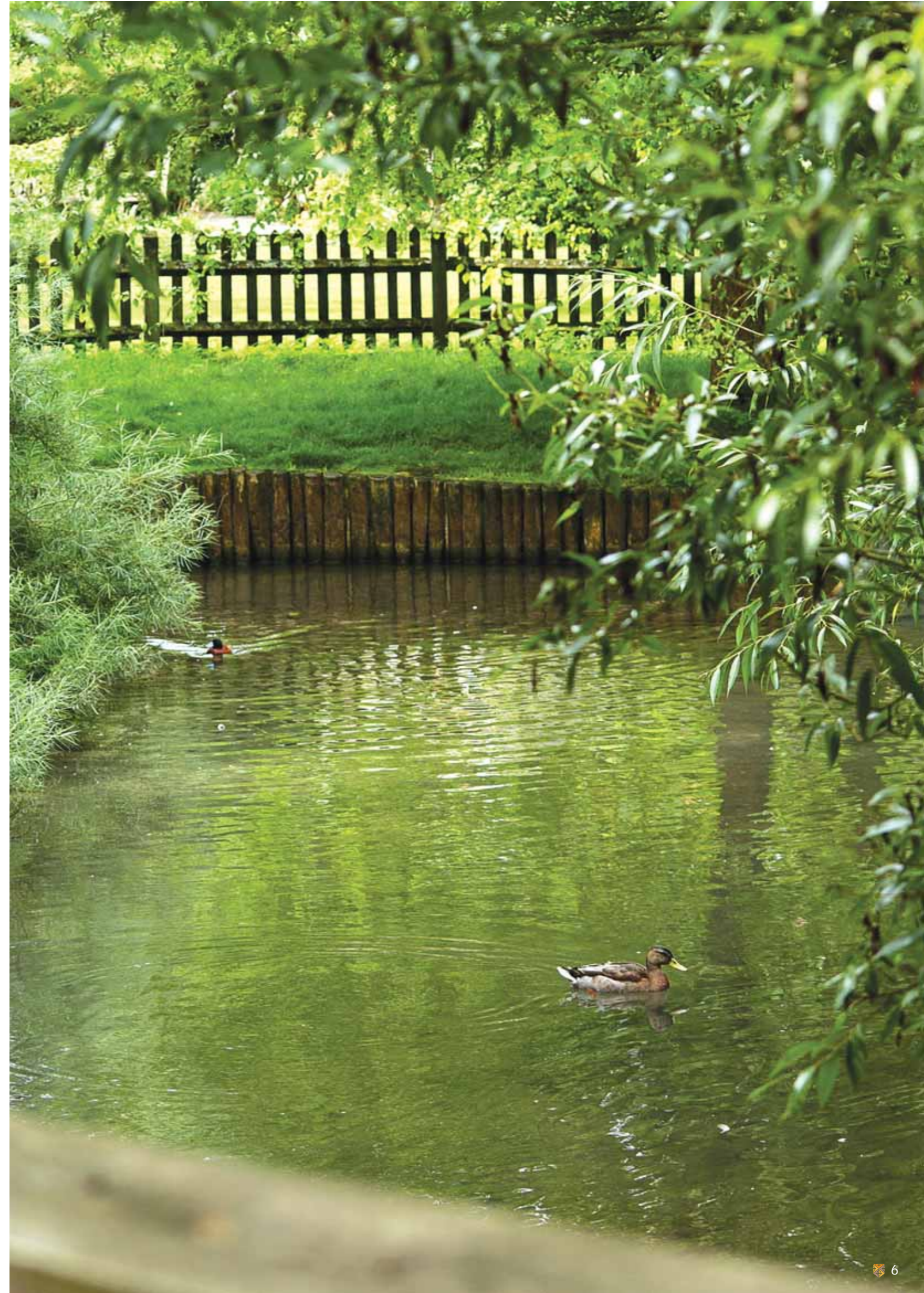
Angerwich Properties and New Forest Developments are specialist residential property developers who have been working together over a number of years creating exceptional homes in exceptional locations.

All of the properties are designed to a very high level with a great deal of attention to ensure the properties blend with the surrounding area

With over 40 year's expertise between them, Angerwich and New Forest Developments approach to residential property is intrinsically different to other companies, focusing on small developments of exclusive and individually designed homes across Hampshire and Dorset.

All of the properties are designed to a very high level with a great deal of attention to ensure the properties blend with the surrounding area and are of the highest quality in terms of the build and interior design.

Recent completed developments include Little Dean House in Stockbridge and Pineview in Alum Chine. In addition to Fifehead Manor they are also developing a site in Winchester, 10 minutes walk from the Cathedral.

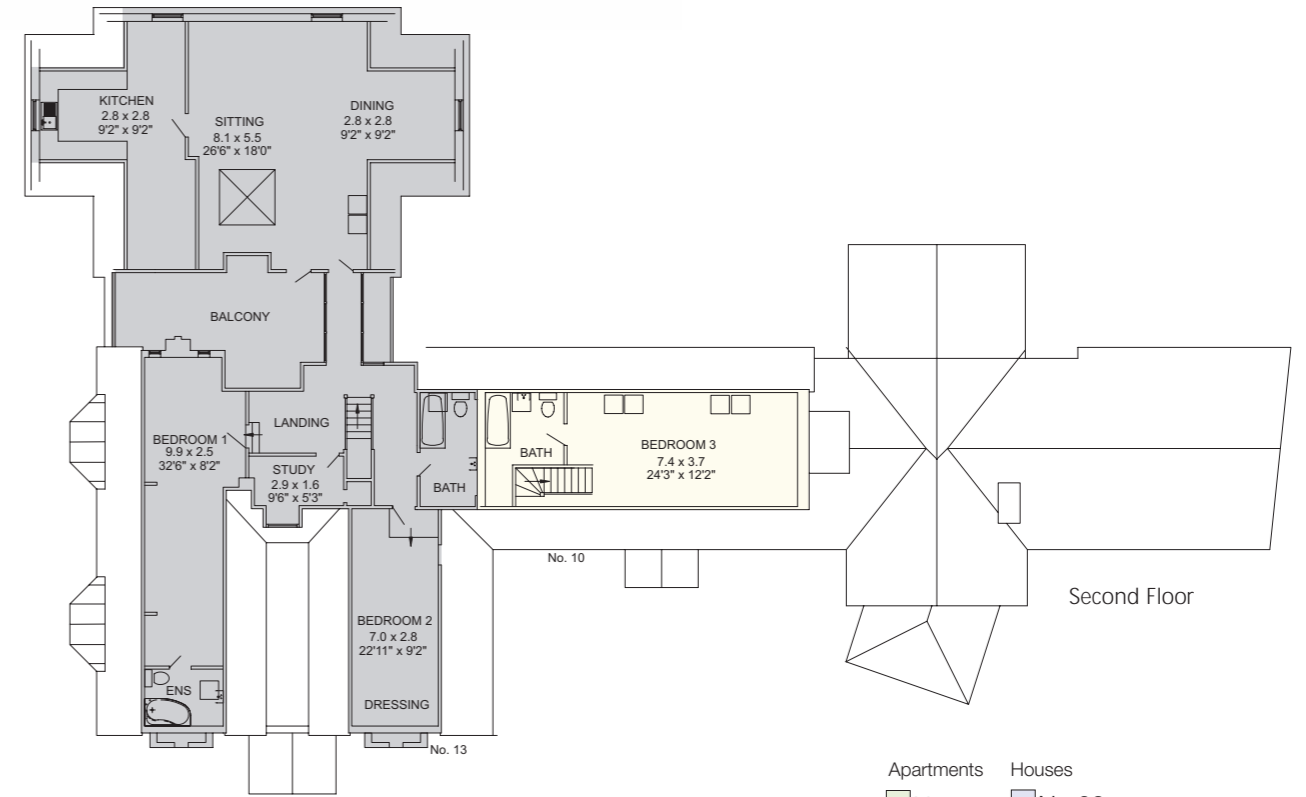


SITE PLAN

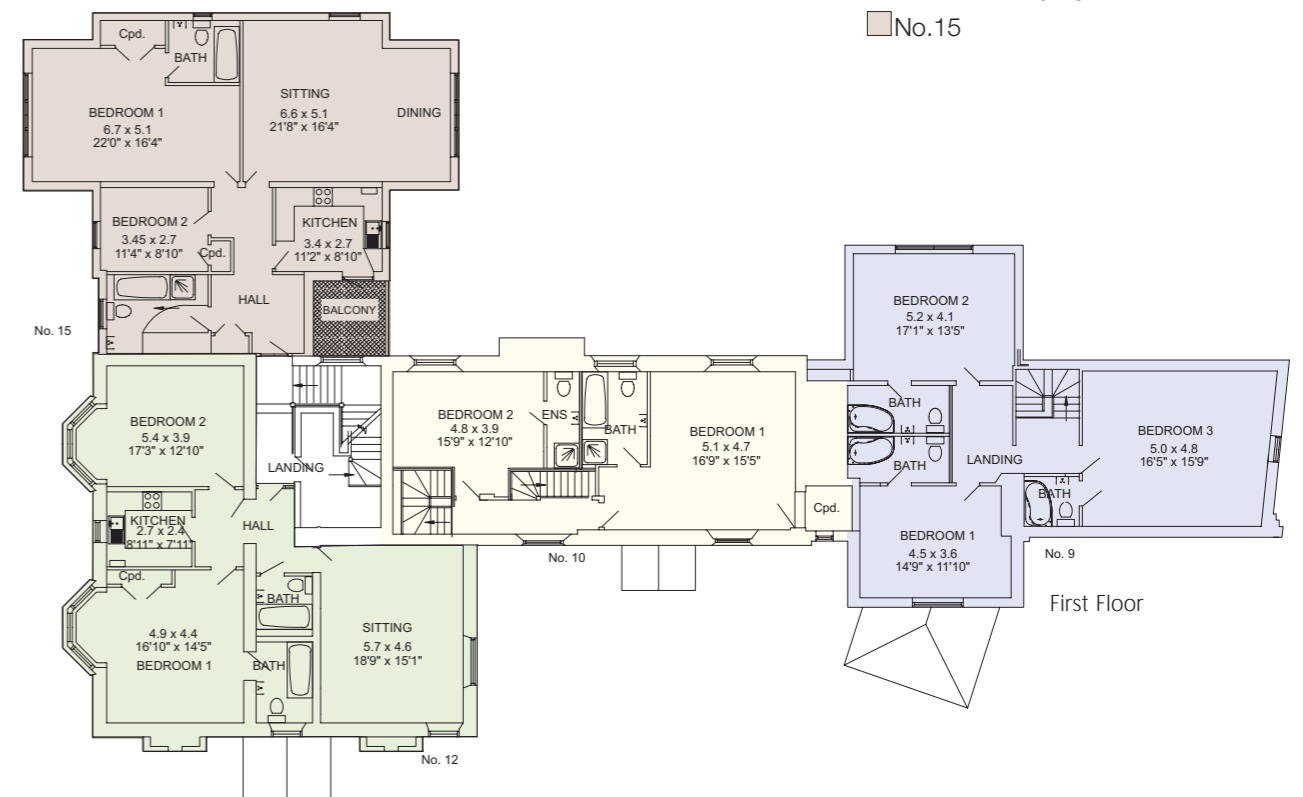
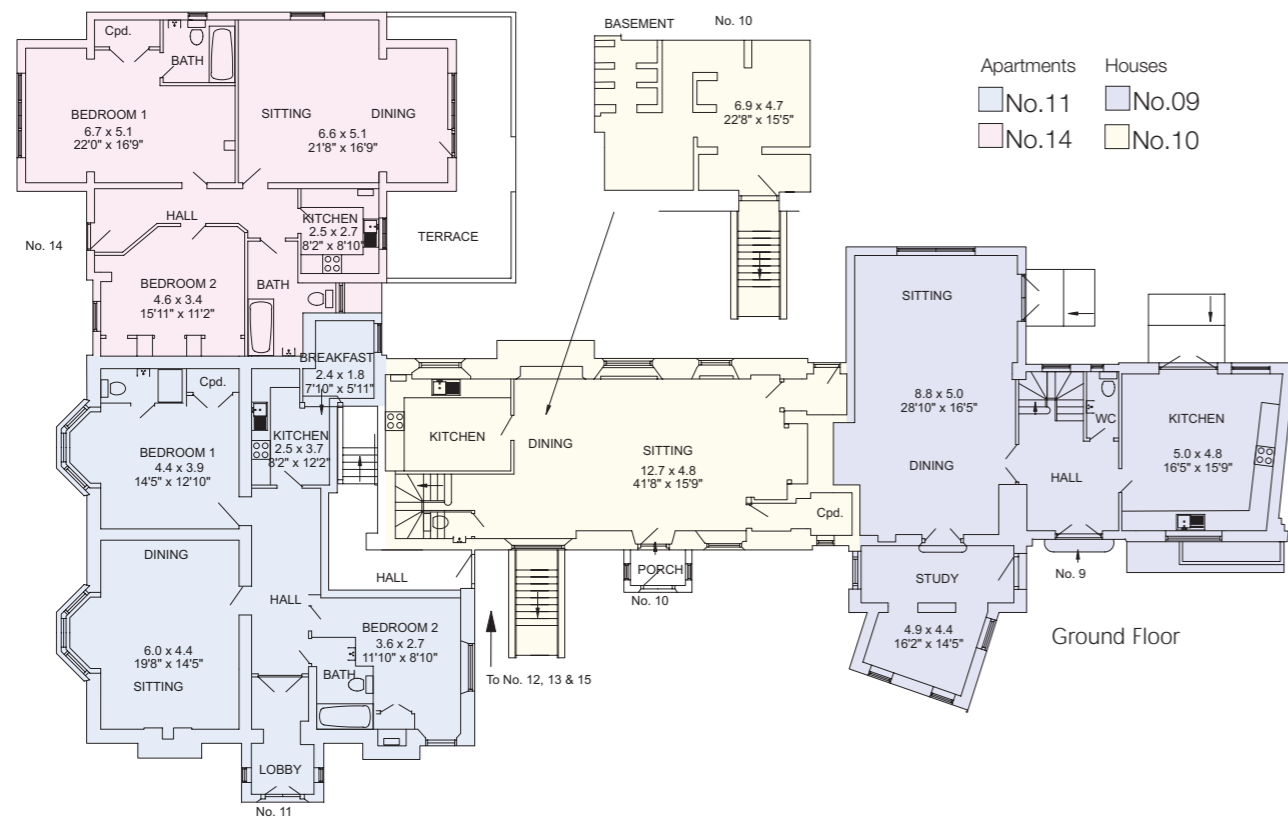


THE MANOR HOUSE

The Manor House has been developed to create five quite unique two bedroom apartments and two outstanding houses. No 10, The Manor House has three spacious bedrooms, all with en-suite bathrooms, together with a stunning lounge/dining room with beams and inglenook fireplaces together with cellarage. No 9, The Manor House has three bedrooms all with en-suite bathrooms together with two reception rooms. Both houses have private gardens to the rear.



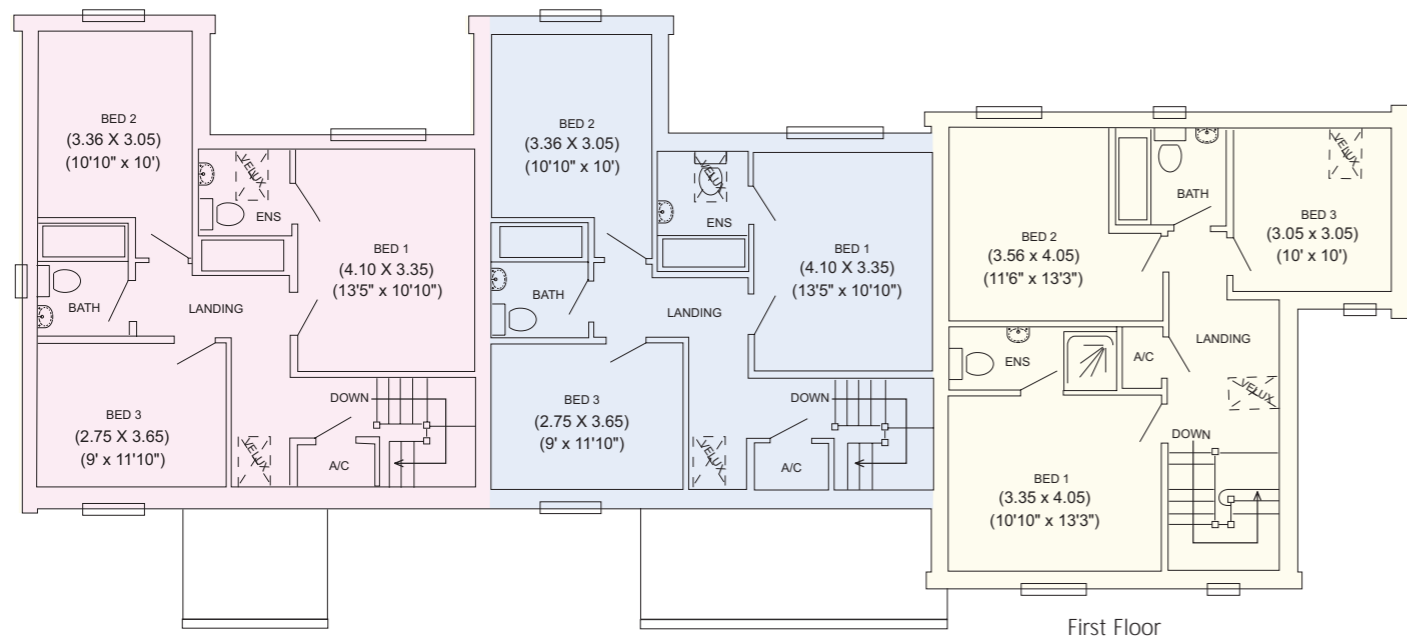
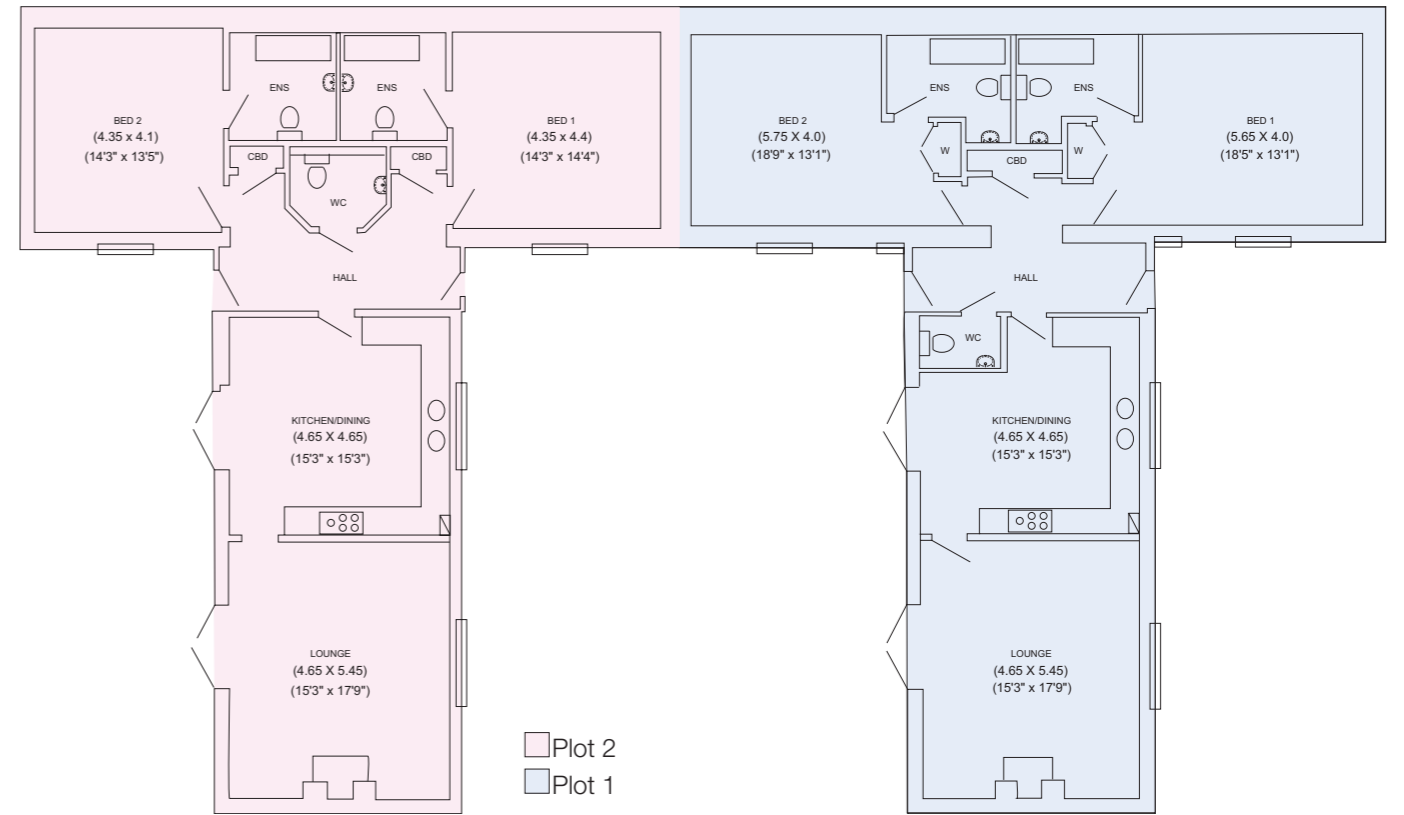
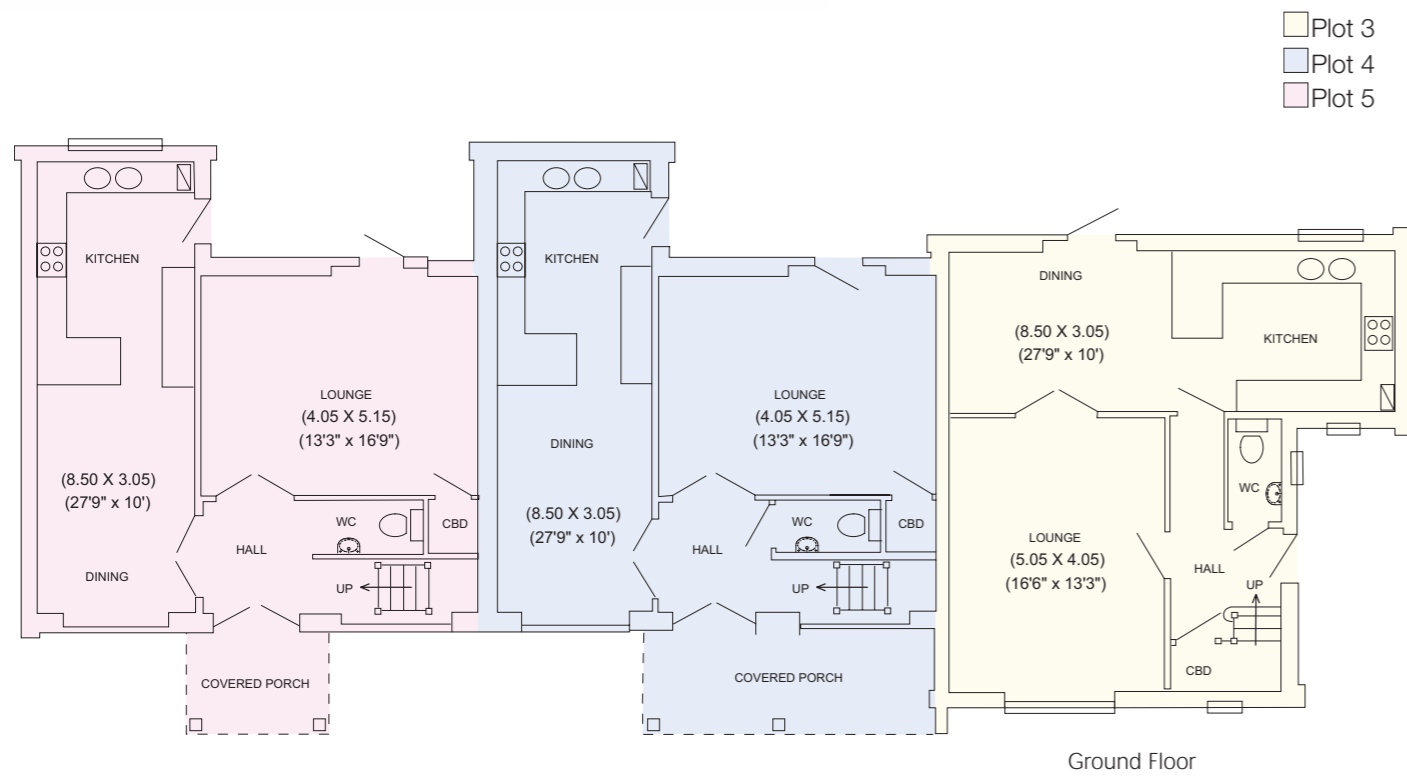
THE MANOR HOUSE





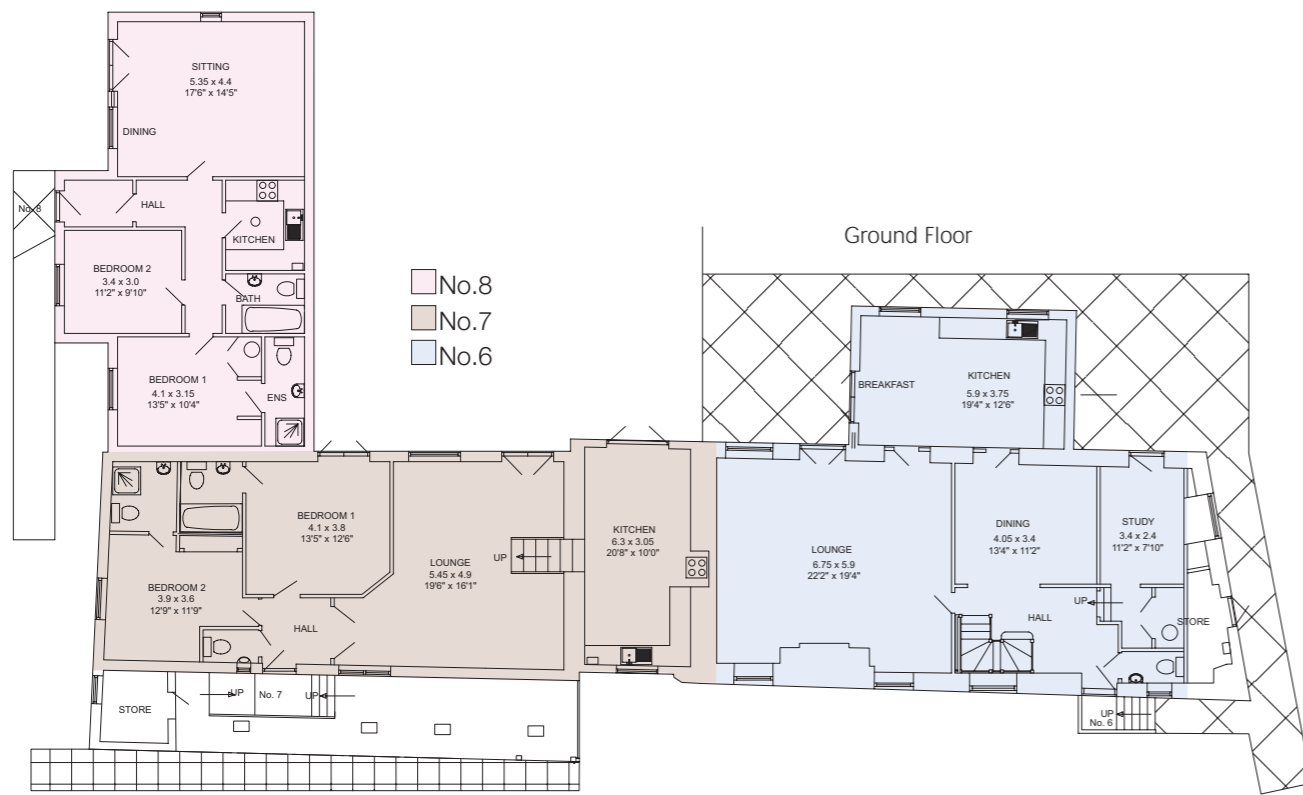
THE BRIDGE HOUSES

Three brand new three bedroom terraced houses with private gardens. All the houses have a large kitchen/dining room together with en-suite bathrooms to the master bedrooms, a family bathroom and separate cloakroom.



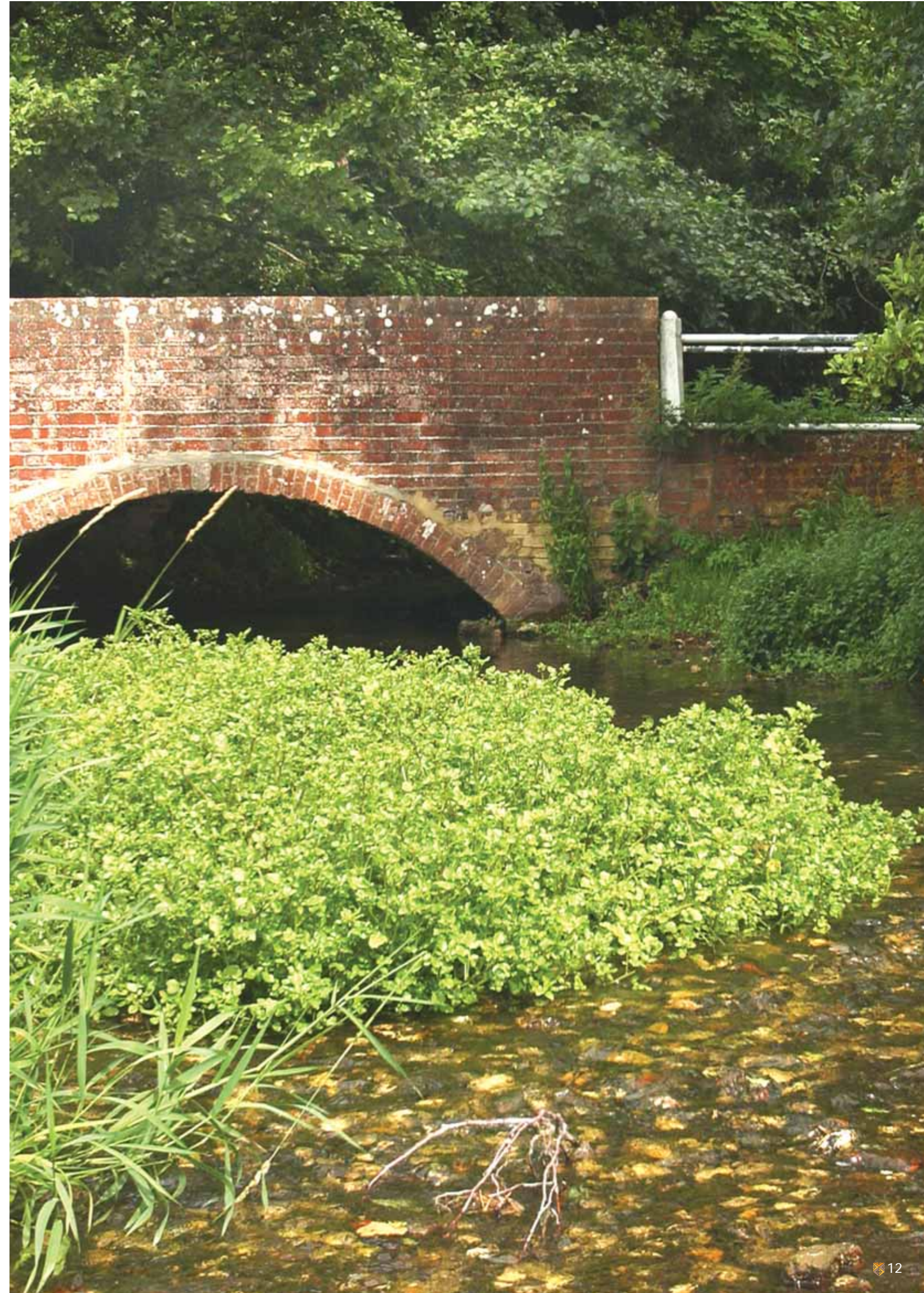
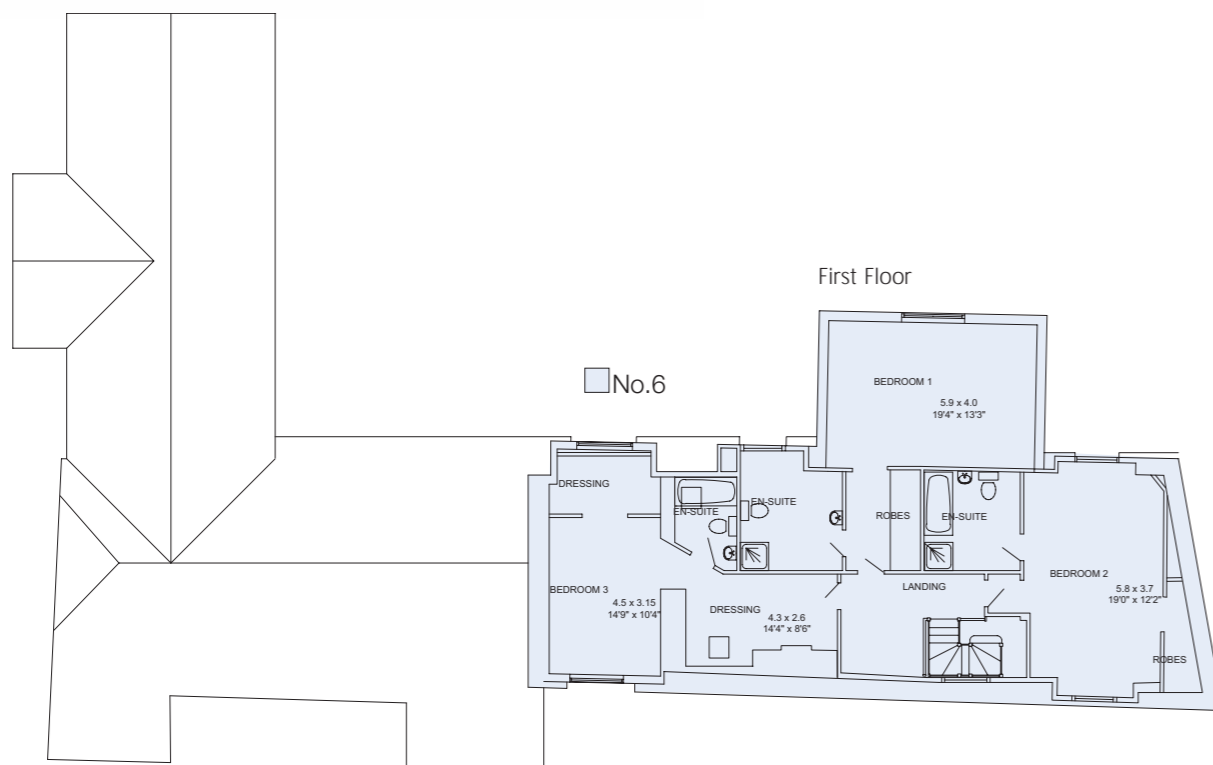
THE STABLES

Two delightful semi-detached brick and flint bungalows with private courtyards. The bungalows have spacious lounges with open fireplaces, lovely kitchen/dining rooms and both have two bedrooms with en-suite bathrooms and a cloakroom.



THE LODGES

A terrace of three individual lodges with private gardens and views over open countryside. Numbers 7 and 8 are two bedroom, number 6 is exceptionally spacious with three bedrooms all with en-suite bathrooms, and three reception rooms together with a kitchen breakfast room.



Bridge over one of the streams through The Wallops flowing to the River Test ▶



INTERNAL SPECIFICATIONS

Each property has an individual design and layout maximising both light and space, some incorporating the original period features and architectural detail. The interior design of the properties has been subject to careful consideration and meticulous attention to detail.



KITCHENS

- Stylish designer kitchens, white or light oak finish
- Polished granite worktops, indigo or black pearl
- Brushed chromium plated Range Master professional cooker with canopy in plots 1, 2, 6 and 7
- Built-in stainless steel hob and oven with canopy over in other plots
- Integrated fridge/freezer, dishwasher and washer/driers*
- Ceramic floor tiles
- Under mounted stainless steel sink with elegant monoblock mixer taps

BATHROOMS

- Brilliant white sanitary ware with monoblock taps in polished chrome
- Shower cubicles with thermostatically controlled shower to en-suites*
- Electric thermostatically controlled shower or shower facility and shower screen above bath in some bathrooms*
- Stylish tiling to all bathrooms and en-suites
- Electric shaving sockets
- Ceramic floor tiles
- Heated towel rails to all en-suites and bathrooms

INTERNAL FINISH

- Smooth finish to ceilings with coving*
- Brass swept lever door furniture
- Deep ornate cornice to the principal rooms in Apartment 11*
- Feature fireplaces in plots 1, 2, 6 & 11

CUPBOARDS

- Purpose-built cupboards where shown

* where applicable

HEATING

- LPG gas central heating system with thermostatically controlled radiators
- Mains-pressure hot water system

ELECTRICAL

- TV points with satellite provision to living room and principal bedroom
- BT points to living room and principal bedroom
- Brassed light switches
- Brassed electrical sockets
- Concealed downlights in kitchens and bathrooms
- Mains operated smoke detectors

GLAZING

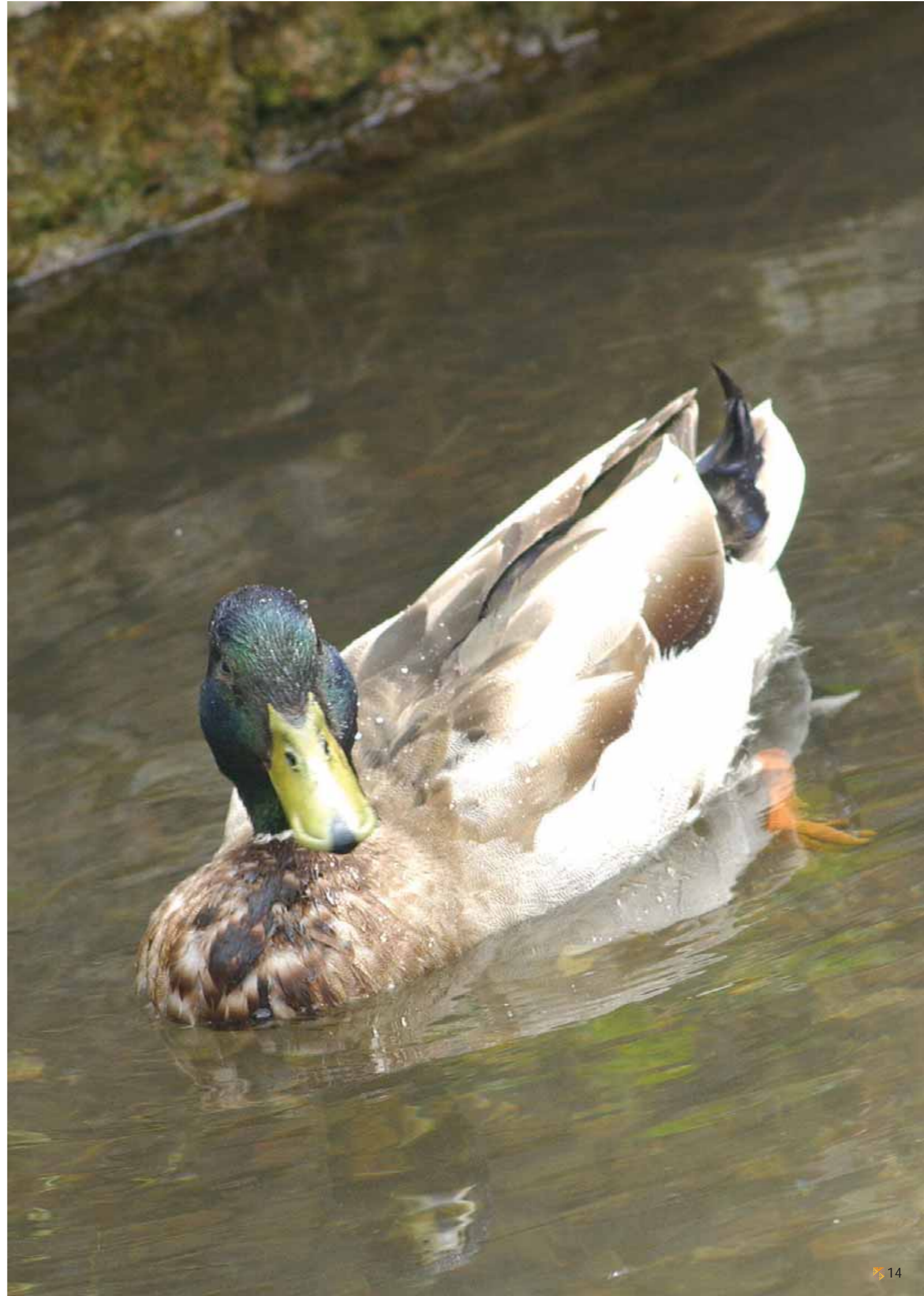
- Original windows and doors have been replaced and reconstructed where necessary, in keeping with conservation regulations, all new windows are double glazed sealed units

GENERAL

- Carpeting in the principal rooms and bedrooms and in the common areas of the apartments

EXTERNAL

- Landscaped communal gardens
- Private gardens or courtyards to plots 1-12
- Balcony to plots 13 and 15, private terrace to plot 14
- Outside taps to plots with private gardens
- Private accessed driveway with allocated parking and guest parking
- Entrance and landscape lighting





Fifehead Manor

Middle Wallop Hampshire

HOW TO FIND US

Fifehead Manor is situated just a few miles from Stockbridge on the A343 in the village of Middle Wallop.

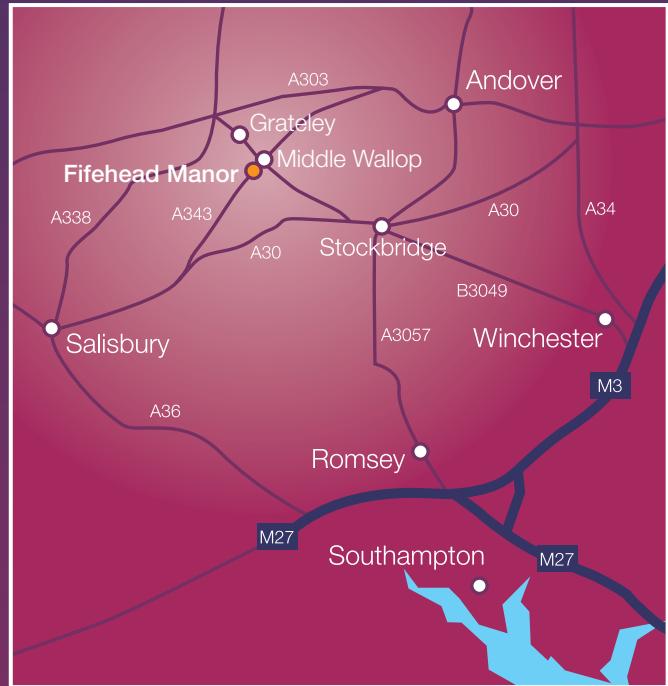
From London take the M3 to junction 8 joining the A303. At Andover join the A343 and Fifehead Manor can be found on the right hand side on entering Middle Wallop.

From Winchester take the B3049 Stockbridge Road and pass through Stockbridge High Street on the A30 to Salisbury. Turn right onto the B3084 to Over Wallop and then turn right onto the A343 and Fifehead Manor can be found just on your left hand side as you enter Middle Wallop.

From Stockbridge take the A30 to Salisbury. Turn right onto the B3084 to Over Wallop and then turn right onto the A343 and Fifehead Manor can be found just on your left hand side as you enter Middle Wallop.

From Romsey take the A3057 and continue to Stockbridge, proceed through the High Street and take the A30 to Salisbury. Turn right onto the B3084 to Over Wallop and then turn right onto the A343 and Fifehead Manor can be found just on your left hand side as you enter Middle Wallop.

From Salisbury take the A338 North and then the A30 towards Stockbridge. Continue straight ahead onto the A343 and Fifehead Manor can be found on the left hand side as you enter Middle Wallop.



If you would like to obtain further information or arrange a viewing, please contact our selling agents.

Morris Dibben Land & New Homes	01794 512802 01962 866422
--	--

email: romsey@morrisdibben.co.uk
or visit the website www.rightmove.co.uk

01962 850333 14/15 Jewry Street, Winchester Hampshire, SO23 8RZ Fax: 01962 850444	Knight Frank
---	---------------------

email: winchester@knightfrank.com
or visit the website www.knightfrank.com

A joint development



For further information on this and our other developments please visit www.angerwich.com